

# ACGME COMPETENCIES & EVALUATIONS



Donna Guinto, AS, C-TAGME  
Thomas Jefferson University Hospital  
Philadelphia, PA



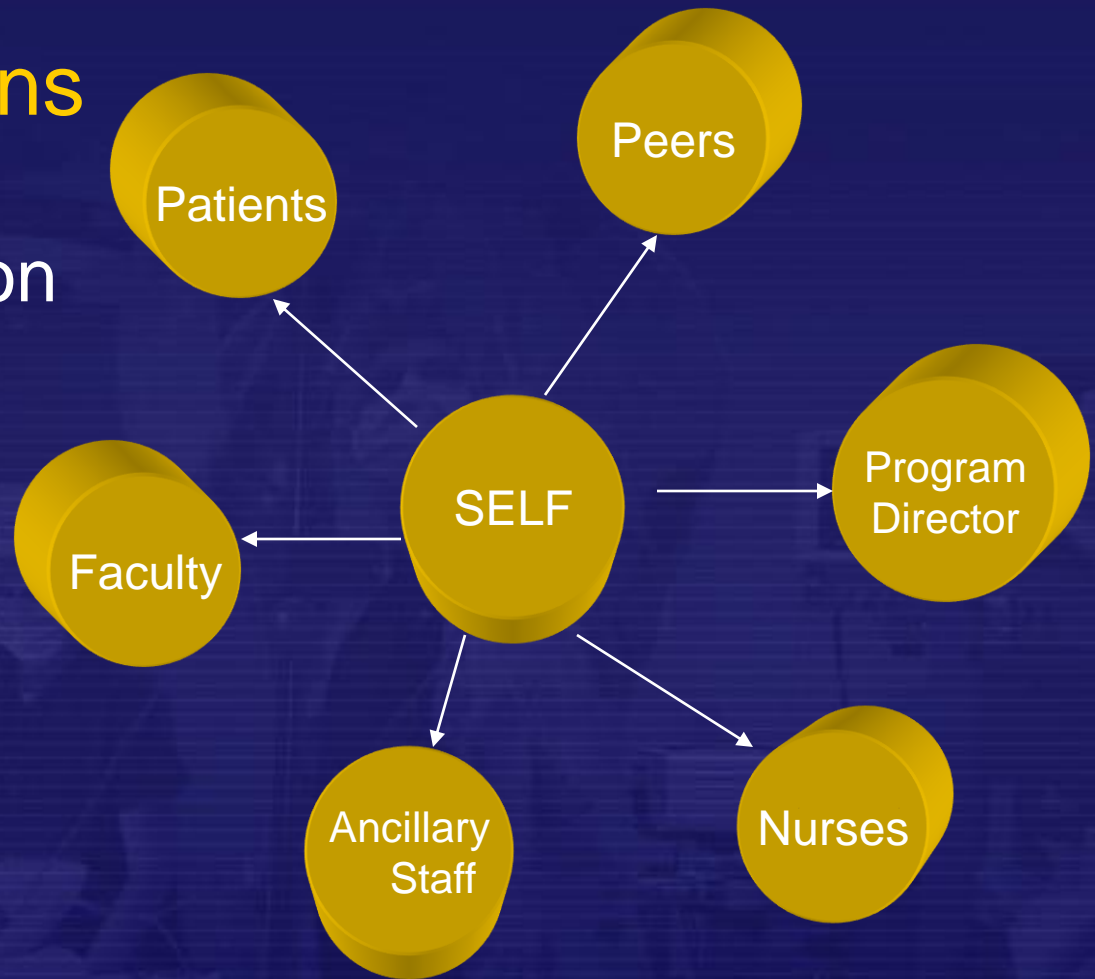
# Resident Evaluations

- Formative Evaluation

- Self
- Faculty
- Peers
- Patients
- Nurses
- Ancillary Staff

- Summative Evaluation

- Provided by the Program Director



# Faculty Evaluation

- The program must provide annual evaluations of faculty performance as it relates to the educational program.

# Program Evaluation & Improvement Evaluation

The program **must** be evaluated annually by:

Faculty  
Residents

*\*The performance of program graduates on certifying exams should be used as one measure of evaluating the programs effectiveness.*



# Examples of Grading

Please provide specific examples of this person's professional behavior that **merit praise or commendation**:

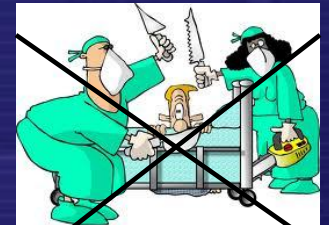
Please provide specific examples of this person's professional behavior that could be a **focus for continued professional improvement**:

Please comment on this resident's overall strengths and/or weaknesses. Please justify any "Exemplary" grades and provide redirecting feedback





- Residents must be able to provide patient care that is compassionate, appropriate and effective for the treatment of health problems and the promotion of health.
  - Quality of H&P's, progress notes
  - Pre-op & post-op care
  - Basic OR skills (hand-eye coordination, knot tying ability)
  - Advanced OR skills (dissection, exposure, suturing)
  - Handling of tissues
  - Understanding and anticipating steps in procedure







# Medical Knowledge

- Residents must demonstrate knowledge of established and evolving biomedical, clinical, epidemiological and social-behavioral sciences, as well as the application of this knowledge to patient care.
  - General medical knowledge (basic science, clinical management)
  - Operative knowledge (anatomy, surgical procedures)



# Practice-based Learning and Improvement

- Residents must demonstrate the ability to investigate and evaluate their care of patients, to appraise and assimilate scientific evidence, and to continuously improve patient care based on constant self-evaluation and life-long learning.
  - Accepts constructive criticism well
  - Quality of presentations at M&M 
  - Ability to lead and manage a service 
  - Teaching of students
  - Teaching of other residents





# Interpersonal and Communication Skills

- Residents must demonstrate interpersonal and communication skills that result in the effective exchange of information and collaboration with patients, their families, and health professionals
  - Able to communicate a plan and justify management decisions
  - Interactions with patients and families
  - Interactions with peers and attendings
  - Interactions with nurses and ancillary staff



# Professionalism

- Residents must demonstrate a commitment to carrying out professional responsibilities and an adherence to ethical principles



## Attitude

Reliability, integrity, and honesty

Preparedness (timeliness, brings appropriate studies to OR, knows pt./case)



# Systems-based Practice

- Residents must demonstrate an awareness of, and responsiveness to the larger context and system of health care, as well as the ability to call effectively on other resources in the system to provide optimal health care.

